

Working as one.

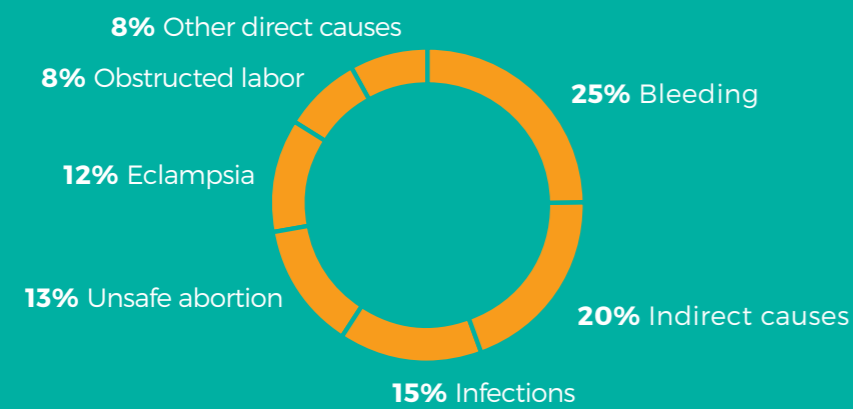
Our target customer.

All sponsors and humanitarian organisations who want to lend a hand by creating a healthcare facility to **preserve childbirths and tackle neonatal mortality** in developing countries.

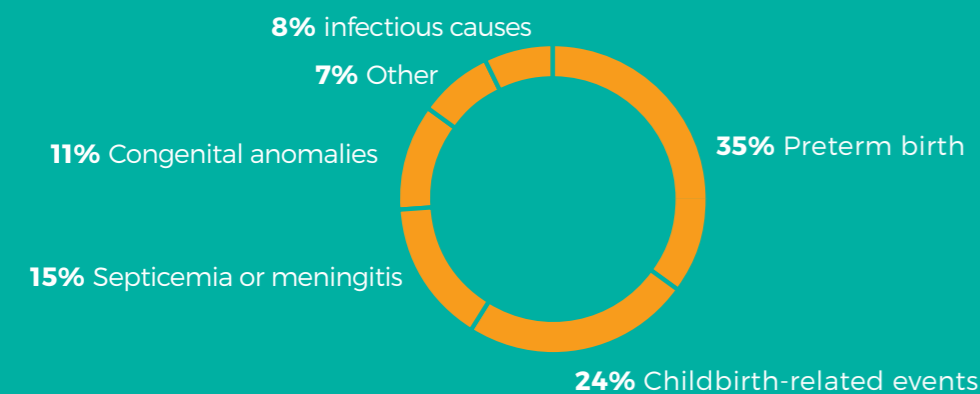
Who we are.

The partner who will assist you in building up an **easy-to-operate neonatal clinic**, along with a **supply plan of single-use medical equipment** that will grant continual operation. We'll provide you with a healthcare format with **low running costs**, capable of drastically decreasing neonatal deaths in remote areas without healthcare facilities.

Causes of maternal mortality ⁽¹⁾



Causes of neonatal infant mortality ⁽²⁾



(1) SEED Medical Publishers · (2) OMS and Gruppo per lo studio epidemiologico materno e infantile (MCEE)

Check out our modular clinic
by scanning the QR code below:



<https://www.savenatality.com/our-clinic/>

Check out our medical equipment
disposables by scanning the QR below:



<https://www.savenatality.com/technical-documentation/>

Let us make this happen.

SAVE NATALITY[®]
HOSPITAL SYSTEM MODULES

SAVE NATALITY[®]
HOSPITAL SYSTEM MODULES

Shall we lend a hand?

A safe birth is
a natural right for everyone.

Our modular clinics are meant to preserve
neonatal mortality in developing Countries.



Sustainable help.

Using funds effectively.

Anyone who has the financial possibility can devote funds to the right social context that is in real need for an effective and efficient neonatal clinic.

We will take care of the rest.

A built-in facility with professional tech support, fully equipped and feasible anywhere in the world.

Our key points.



This is what we call "Sustainable help".

The modular structure.

A revolutionary modular turnkey clinic, with equipment and training to be operational as soon as it is built.

We have focused on a single target: a fully functional obstetric facility, equipped with all equipment, devices and disposables anywhere in the world.

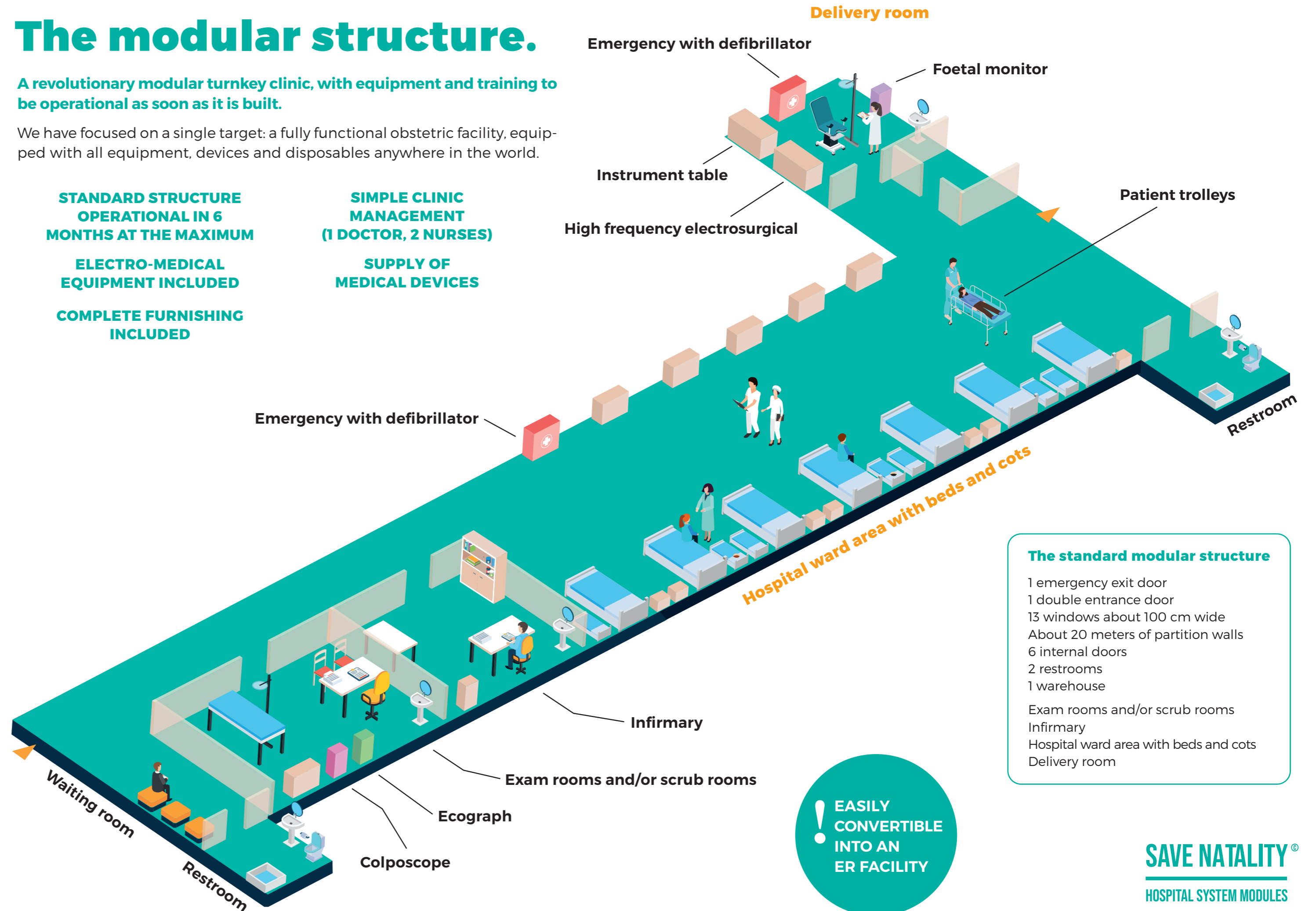
**STANDARD STRUCTURE
OPERATIONAL IN 6
MONTHS AT THE MAXIMUM**

**ELECTRO-MEDICAL
EQUIPMENT INCLUDED**

**COMPLETE FURNISHING
INCLUDED**

**SIMPLE CLINIC
MANAGEMENT
(1 DOCTOR, 2 NURSES)**

**SUPPLY OF
MEDICAL DEVICES**



- The standard modular structure**
- 1 emergency exit door
 - 1 double entrance door
 - 13 windows about 100 cm wide
 - About 20 meters of partition walls
 - 6 internal doors
 - 2 restrooms
 - 1 warehouse
 - Exam rooms and/or scrub rooms
 - Infirmary
 - Hospital ward area with beds and cots
 - Delivery room

**EASILY
CONVERTIBLE
INTO AN
ER FACILITY**